

OpenPDM

OSLC Adapter

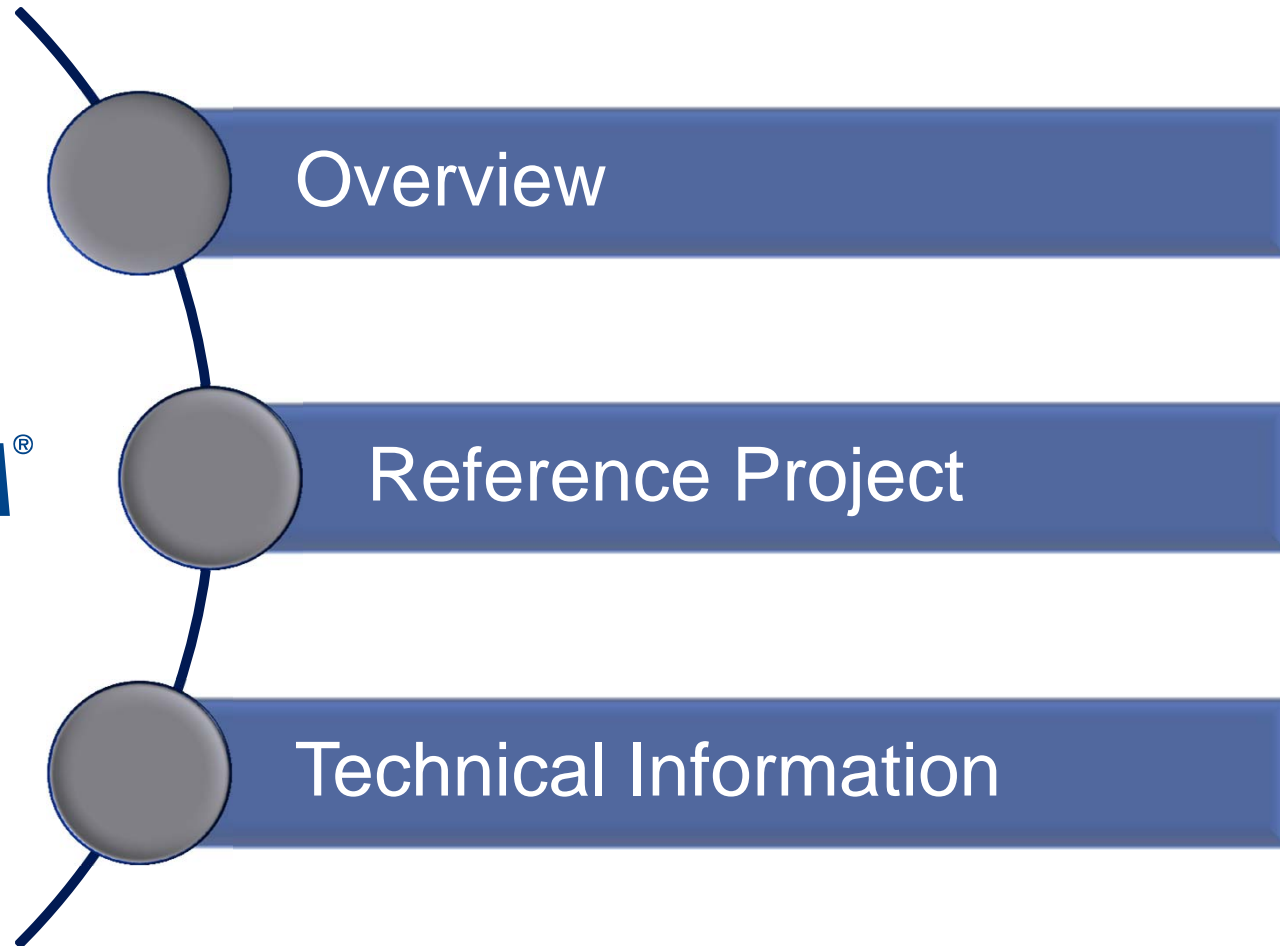
Product Overview



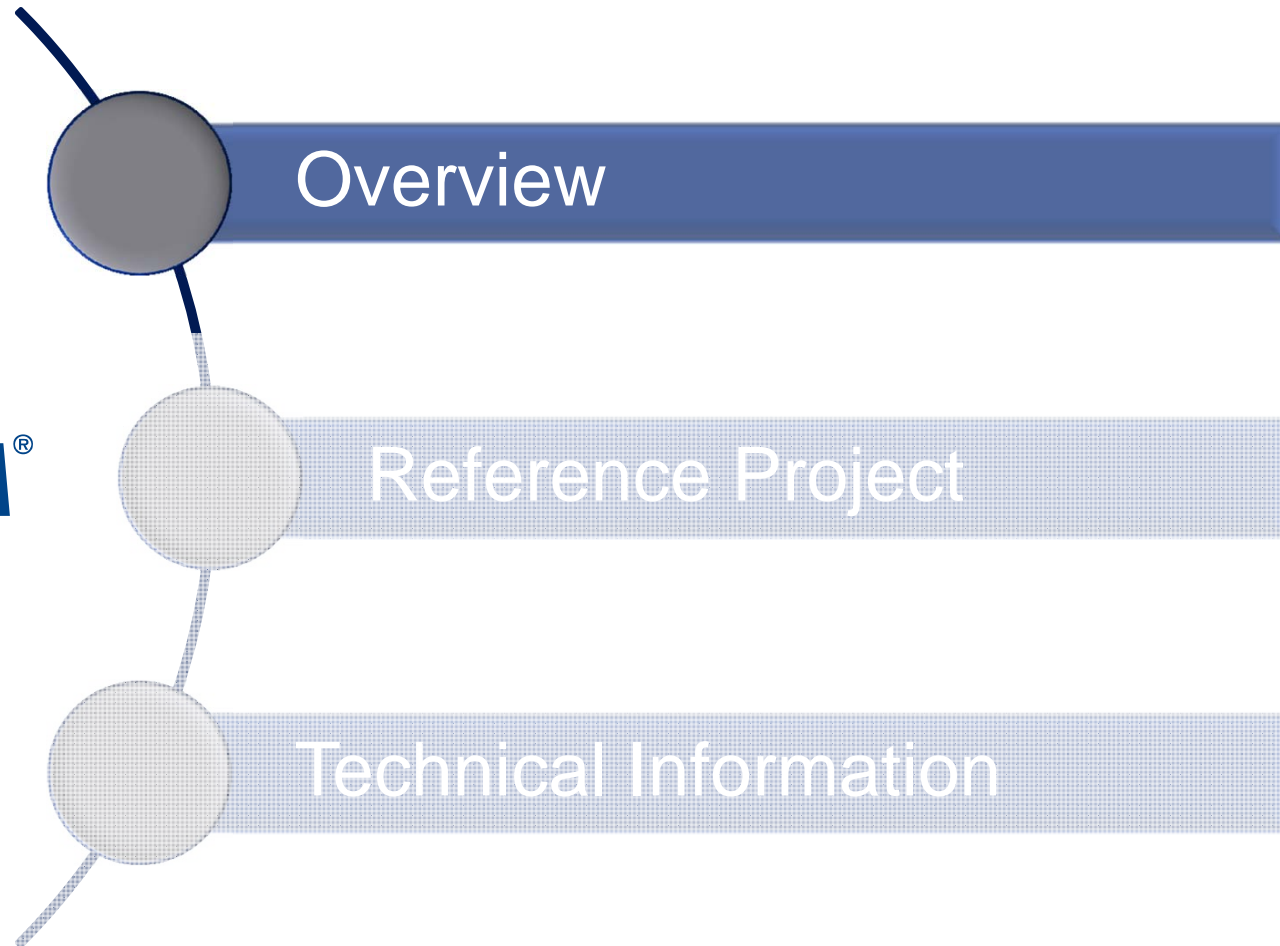
PROSTEP AG • Dolivostraße 11 • 64293 Darmstadt • www.prostep.com

5.11.2015

OPEN PDM[®]

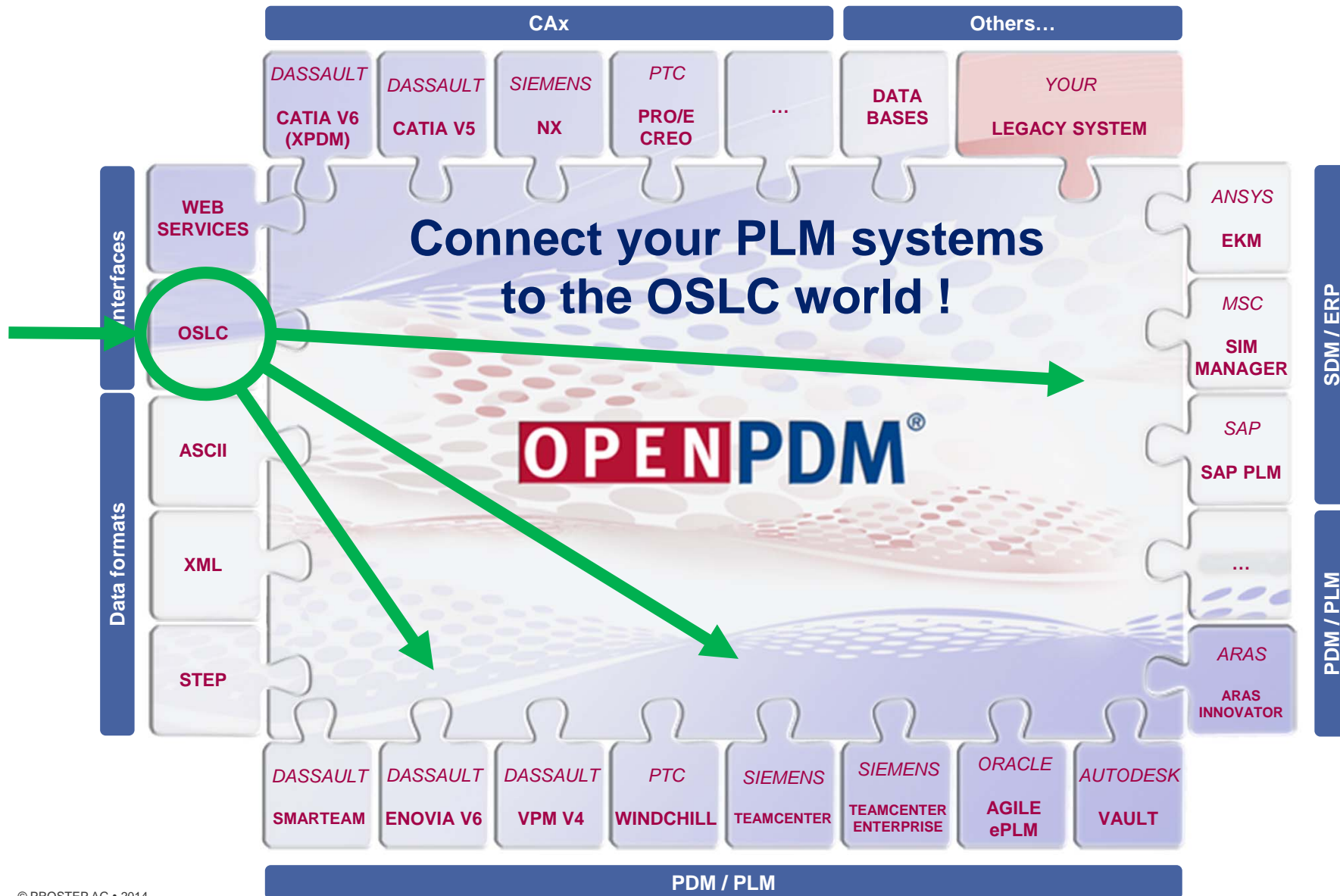


OPEN PDM[®]



OpenPDM OSLC Adapter

Open Services for Lifecycle Collaboration



- The OpenPDM OSLC Adapter makes your PLM system(s) available to the OSLC world
- It offers OSLC standard services, especially for those PLM systems which don't offer native ones
- The adapter is an add-on for the OpenPDM integration framework which provides connectors to a wide range of systems
- The OpenPDM OSLC services can be integrated in any OSLC consuming applications
- The gap between ALM and PLM can be closed

OpenPDM Information Linking

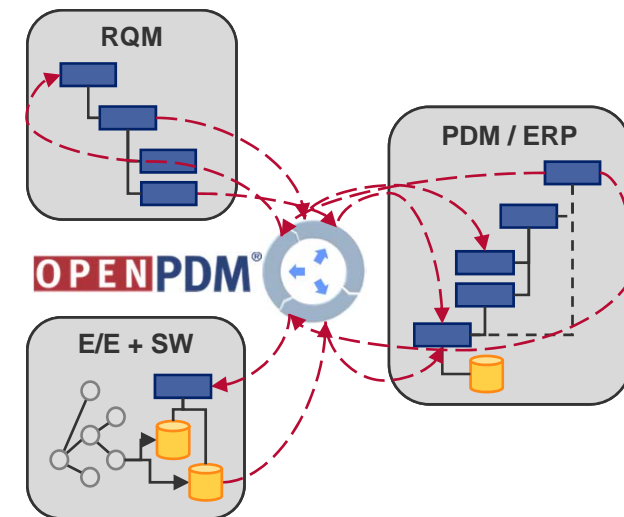
Linking Data of various Disciplines

■ Functional principle

- Data is linked (and not copied)
- User and processes have online access to external data in connected systems

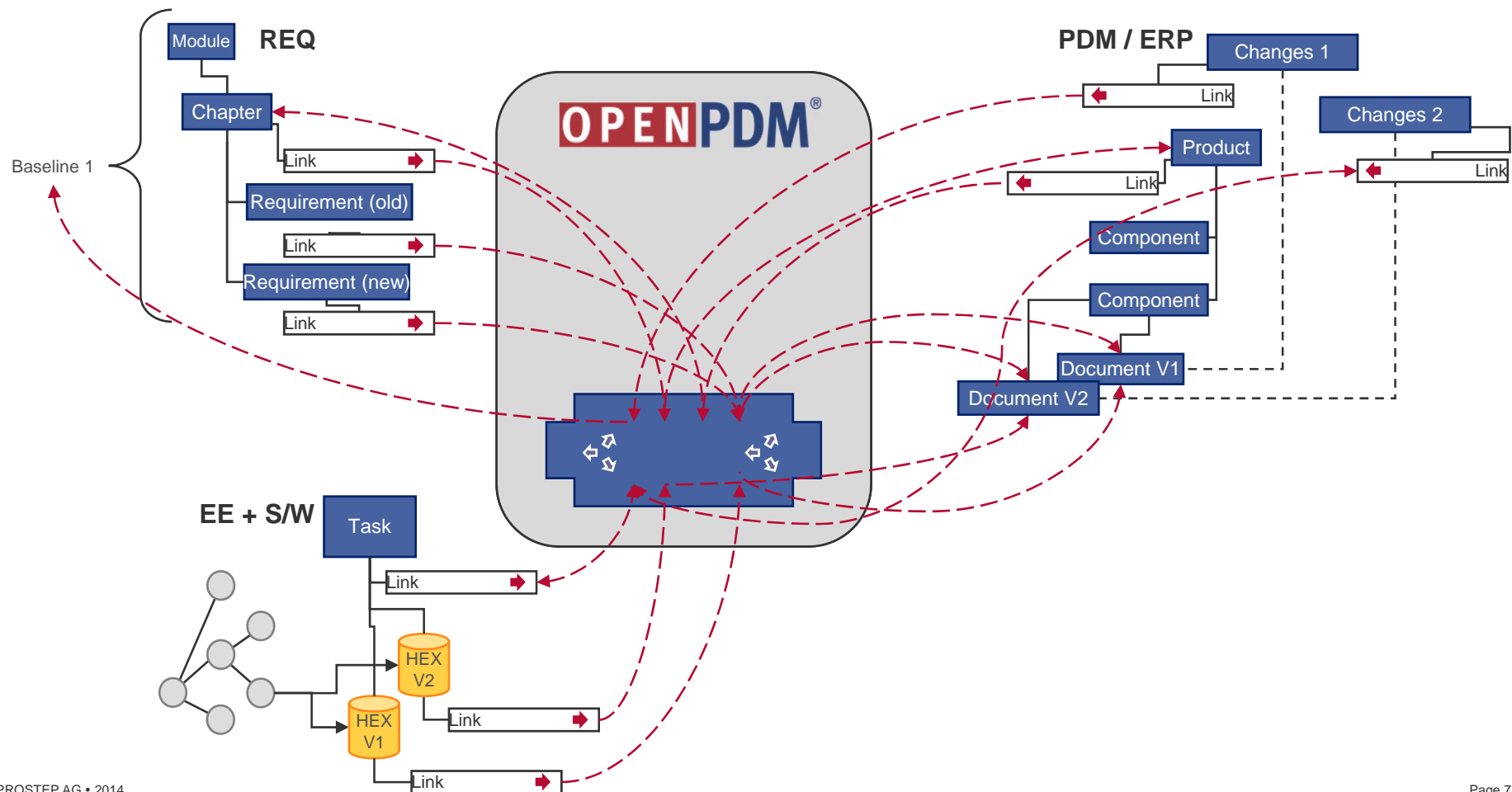
■ Advantages and benefits

- Correlations between domains will be visible and manageable (heading: traceability)
- Consistency of data becomes manageable, errors are reduced and complex dependencies become controllable

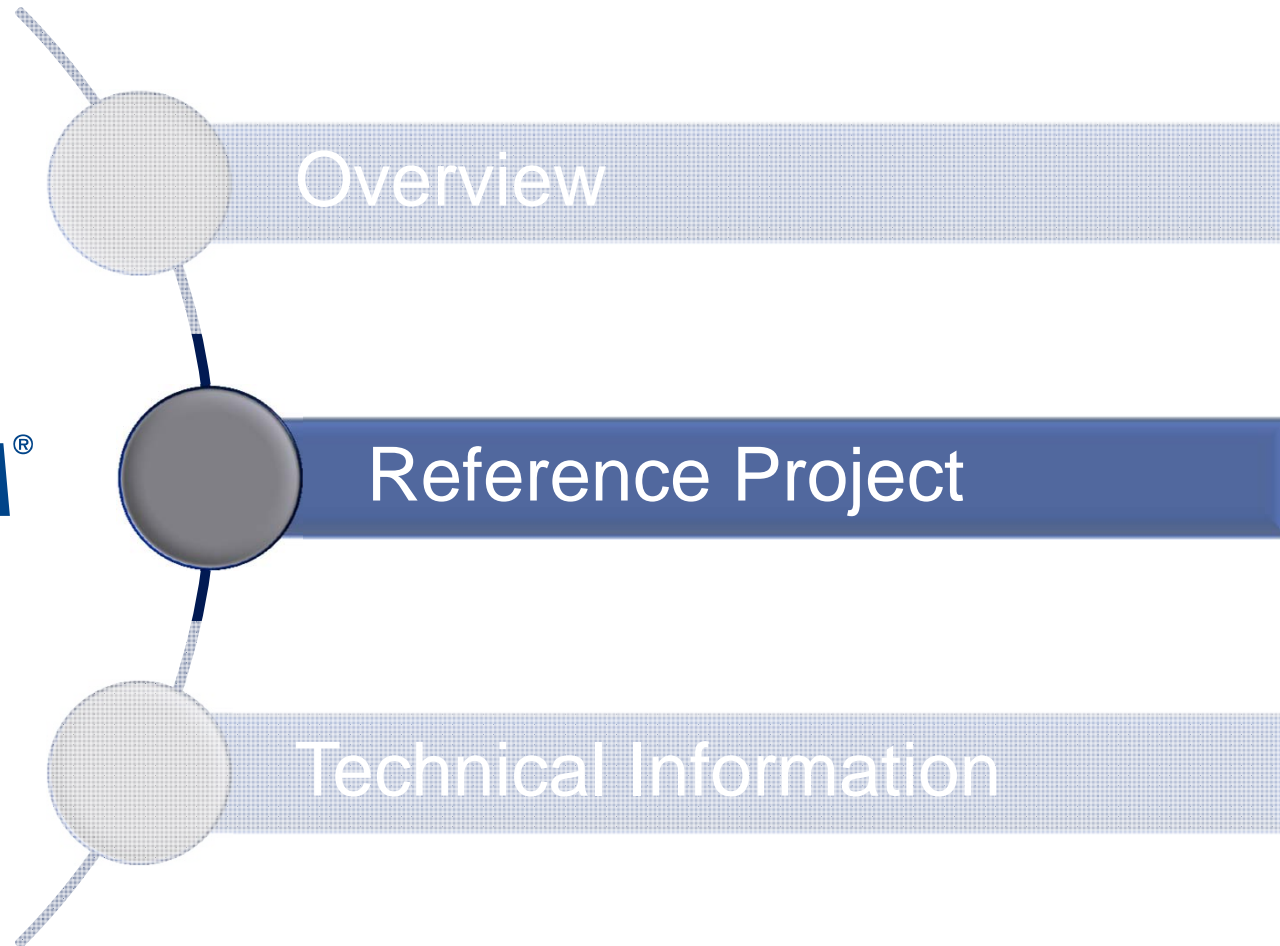


OpenPDM Information Linking Example

- Linking of product data, requirements & software
- Simple example – many links
- Nowadays these links exist only in the minds of the users!



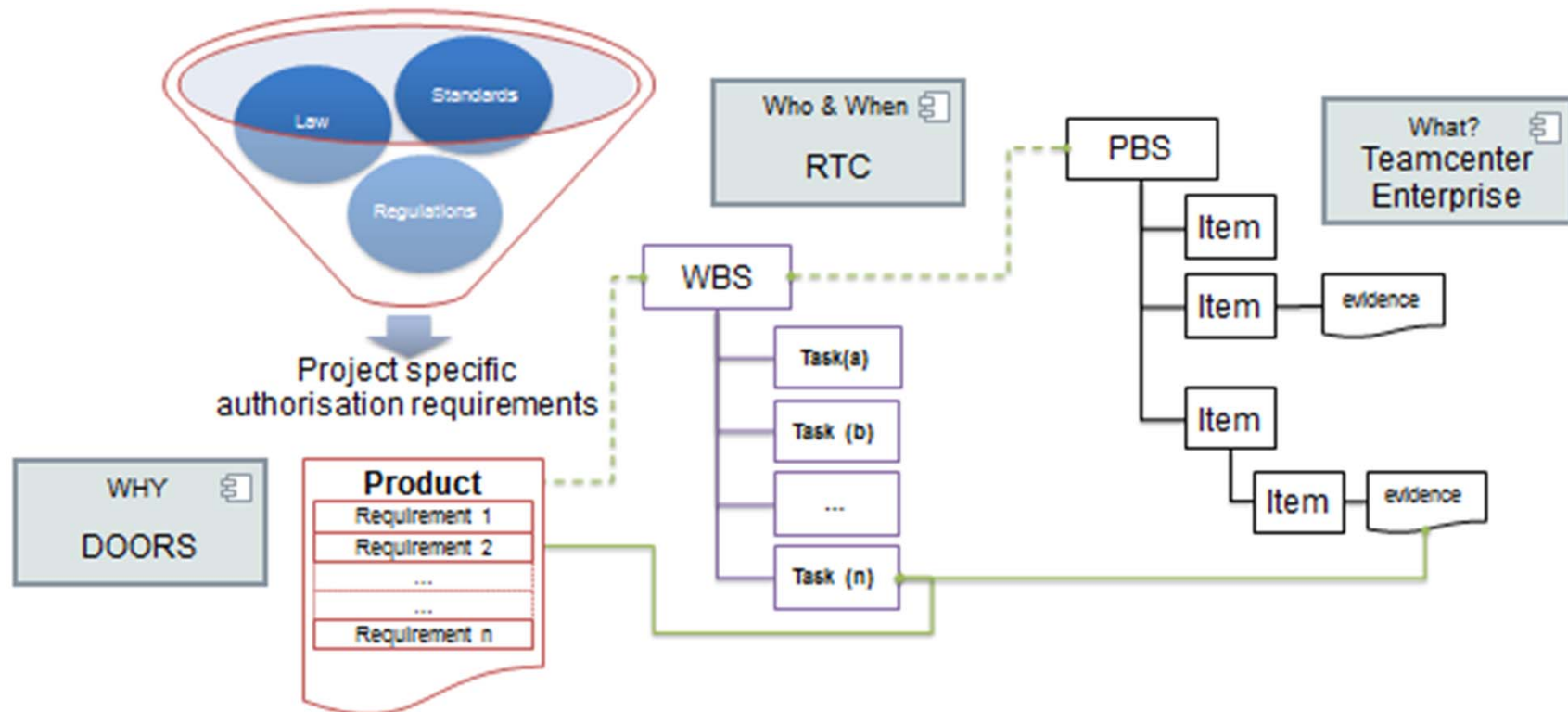
OPEN PDM[®]



OSLC based Solution at Bombardier for an integrated PLM/ALM Information Management



Motivation for an Integrated Solution

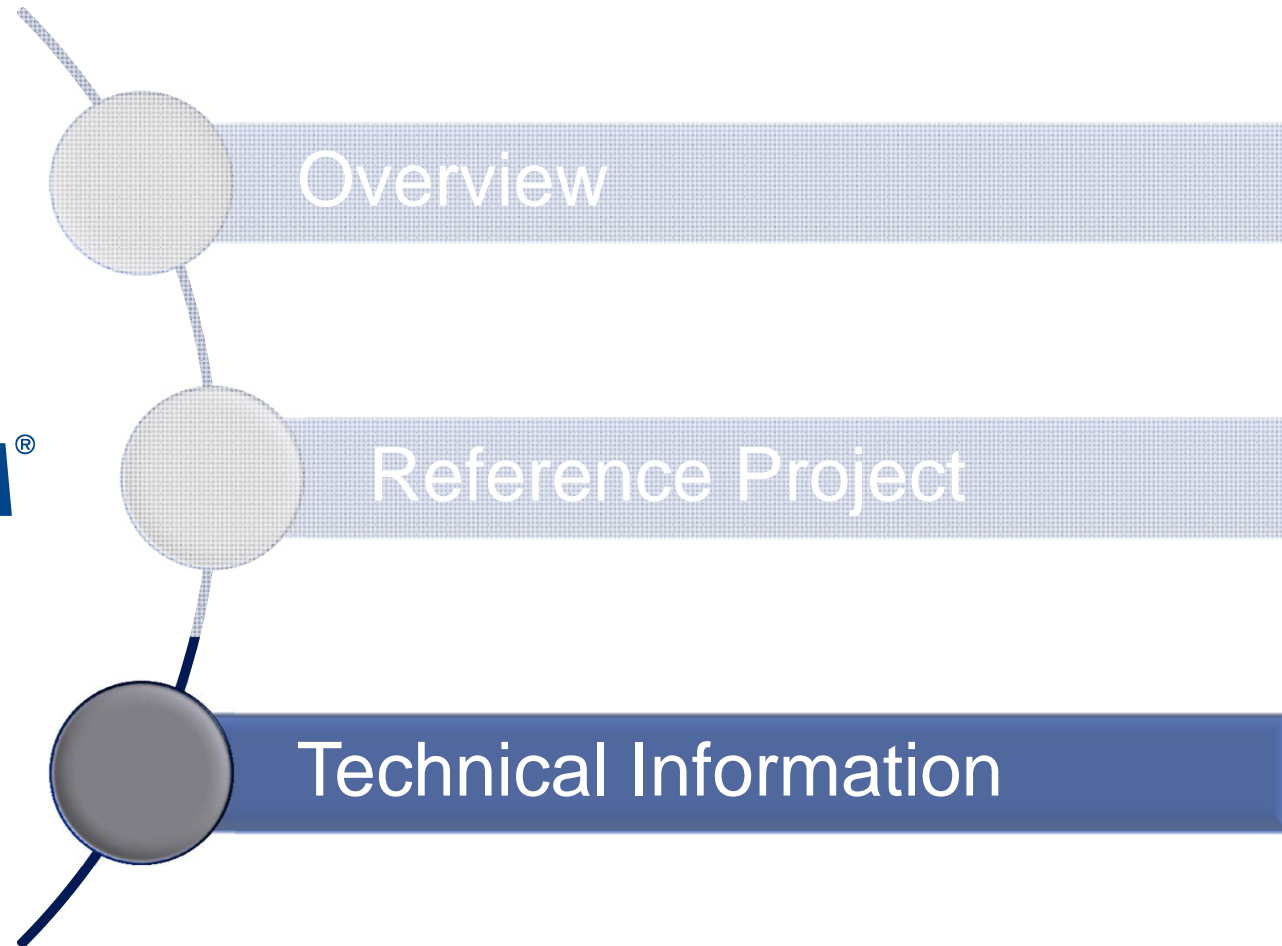


OSLC based Solution at Bombardier with OpenPDM as OSLC Enabler for Teamcenter

Architecture | The Big Picture

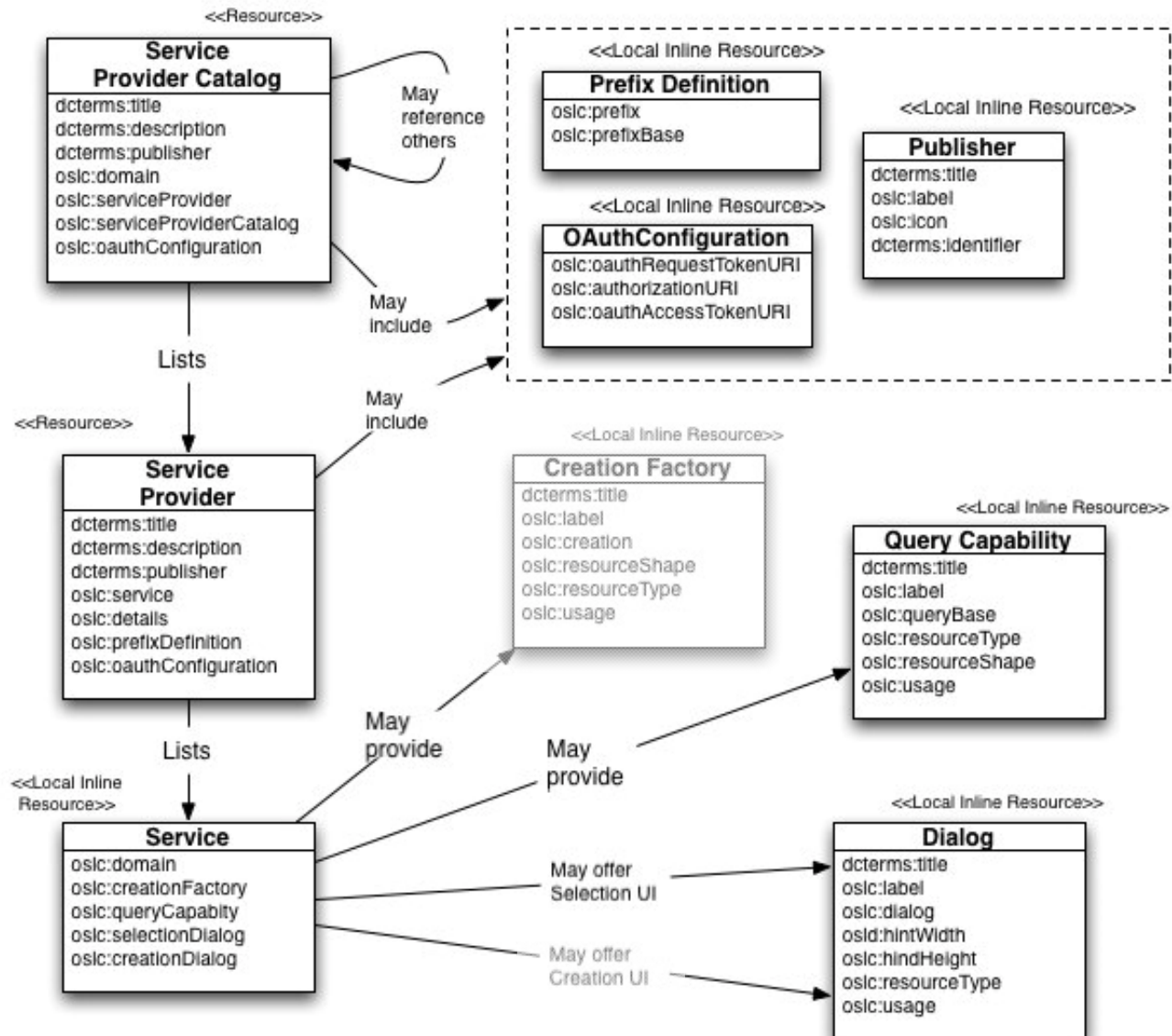


OPEN PDM[®]



OpenPDM OSLC Adapter

OSLC 2.0 Specification Coverage



OpenPDM OSLC Adapter

Supported Features

- OSLC Service Providers (OSLC Core 2.0)
- Jazz specific Root Service
- Change Request Resources
 - as RDF/XML and
 - as JSON (OSLC CM 2.0)
- Query Capabilities (OSLC Core 2.0)
- Selection UI (OSLC Core 2.0)
- OAuth
- Link documents managed in Backend as related resource to OSLC CM entity
- Provide download for documents

Thank you very much for your attention

Contact: infocenter@prostep.com

PROSTEP AG • Dolivostraße 11 • 64293 Darmstadt • www.prostep.com