



# OSLC PLM Workgroup meeting Dec 7<sup>th</sup> 2010

V0.2

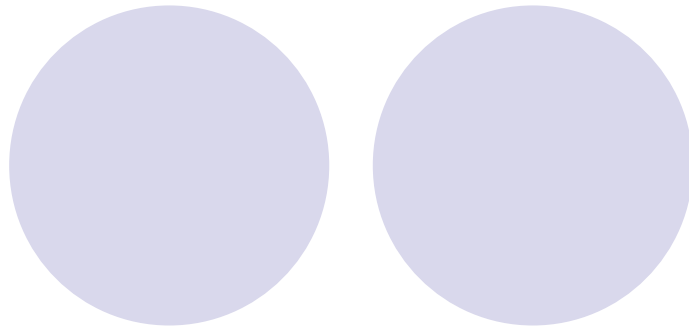
Rainer Ersch  
Gray Bachelor

# Today's agenda

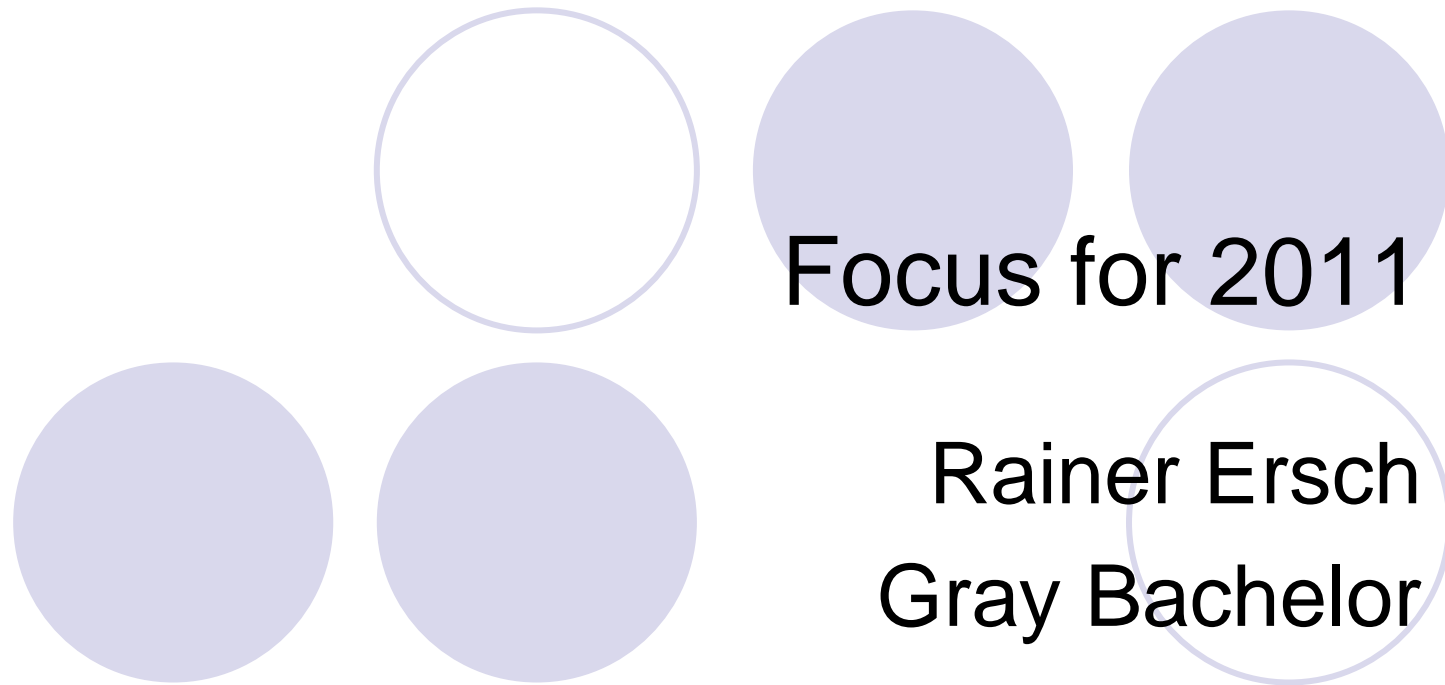


- Introductions
- Progress with analysis of the OSLC Specs
- Priorities and timetable for 2011
- Plan next meeting
- AOB
- Close

# Analysis of the OSLC Specs and the PLM Reference model in the context of SE Scenario #1



Gray Bachelor  
Mike Loeffler  
Ian Green



# Focus for 2011 – discussion topics 1

- Within our current scenario
  - How to deal with product structure ?
  - How to deal with revision and change control across ALM-PLM ?
  - How to deal with CM across ALM-PLM e.g. association, baselines ?
  - How to deal with BOMs ?
  - How to deal with variants ?
  - How deal with artifacts ?
  - Collaboration between different lifecycle management viewpoints
    - Products
    - Systems
    - Software

# Focus for 2011 – discussion topics 2

- Showcase
- Support for prototyping
  - of the scenario
  - Other
- Catalog of vocabulary and terms for ALM-PLM
- Support industry reference model
  - Domain model (Information model)
- Additional scenarios

# Sample timetable for 2011

	Q1	Q2	Q3	Q4
Current Scenario #1	Make recommendations to existing SPECS	Agree with SPEC owners	Prototype & support	Pilot & Support
Spec alignment with standards	AP233 / SysML alignment for Requirements	Prioritise next areas	Support SysML build out	Proposal for ongoing alignment
Extended scenario #1	Structure, Revisions, Artifacts	Baselines Variants	Identify next extensions	Propose
ALM-PLM Reference model	Invitation	Converge	Pre-release	Release 1.0
New scenarios		Identify candidates	Select	Alignment
Supporting Spec consumption	Collect collateral	Community event	Worked example	Community event



Any other Business





# Proposal for next meetings

- Scenario support working sessions
  - Dec 14<sup>th</sup> 11am ET
  - Jan 6<sup>th</sup> or Jan 11<sup>th</sup> 11am ET
  - Jan 25<sup>th</sup> 11am ET
- Main PLM Workgroup
  - Monthly
    - Jan 18<sup>th</sup> 11am ET
    - Feb 22<sup>nd</sup> 11am ET
    - March 22<sup>nd</sup> 11am ET



Thank you

Rainer Ersch

[rainer.ersch@siemens.com](mailto:rainer.ersch@siemens.com)

Gray Bachelor

[gray\\_bachelor@uk.ibm.com](mailto:gray_bachelor@uk.ibm.com)