




IBM Software Group

OSLC PLM Workgroup 3Q update

Gray Bachelor
V0.1
IBM



Rational.



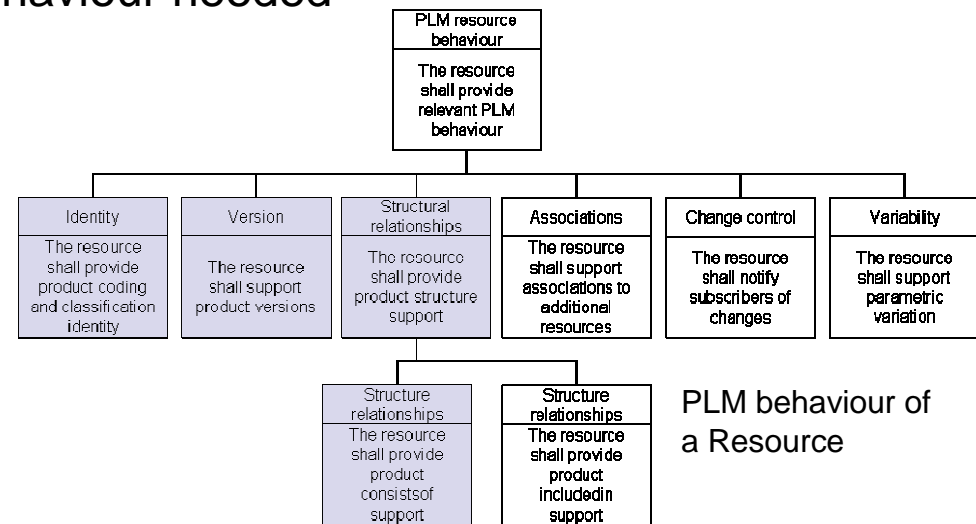
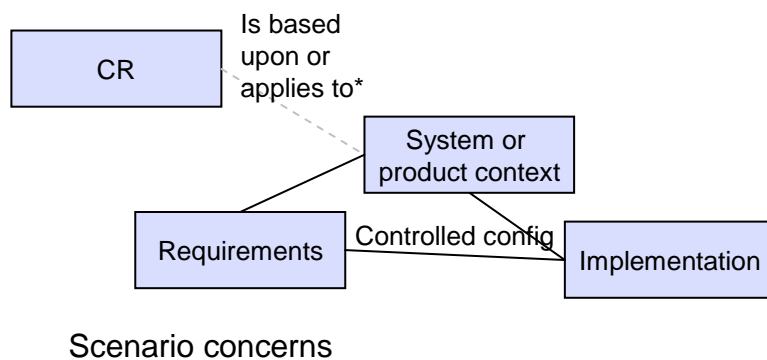
[Go to IBM](#)

The OSLC PLM Workgroup

- Chair: Rainer Ersch of Siemens Research
- Organiser: Gray Bachelor, IBM
- Join our wiki at <http://open-services.net/bin/view/Main/PlmHome>
- Join our workgroup – Tuesday 11am ET
 - ▶ Details on the above Workgroup page

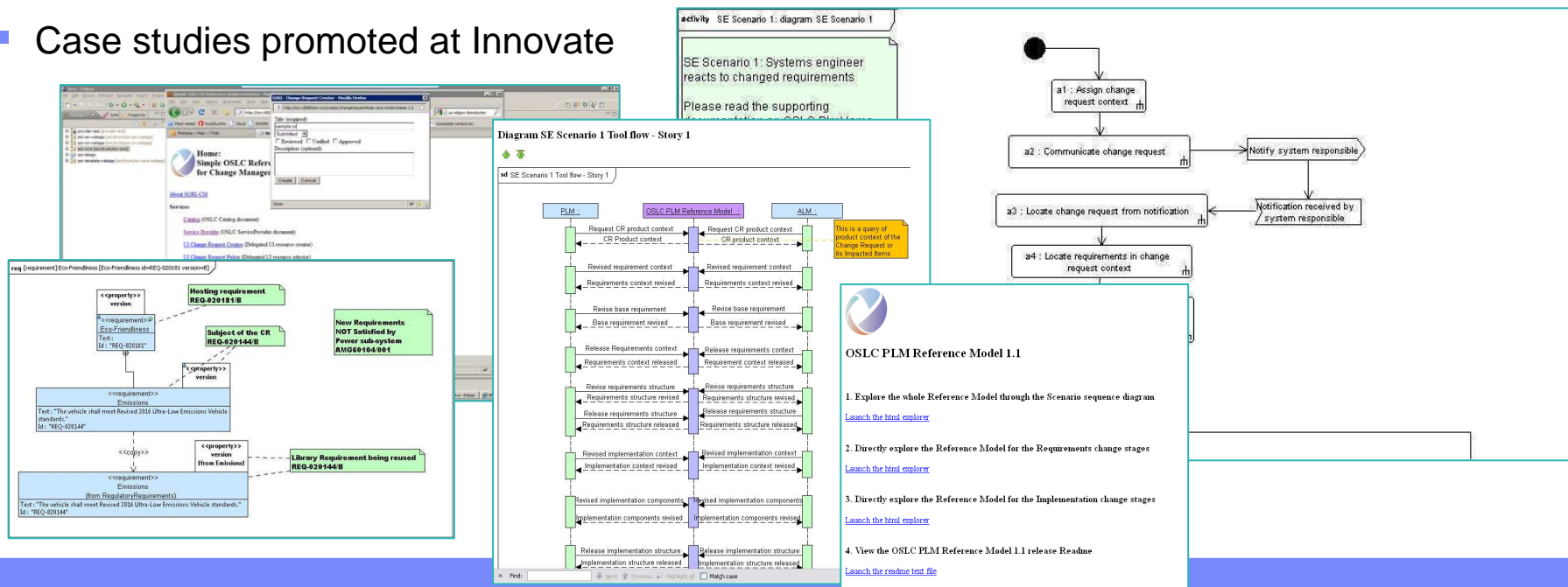
OSLC PLM Workgroup mission and overview

- The OSLC PLM workgroup aims to *promote use of existing* OSLC specifications in ALM/PLM settings and *contribute towards extension* or new OSLC specifications base upon need for ALM/PLM collaborations
- Our current focus is on a typical industry scenario an existing product is updated via its requirements and design implementation a.k.a “a Systems Engineer responds to change in requirements (for an existing product)”
- This scenario relies upon the change in association between CRs, Requirements, Products and the Design Implementation
- We have identified typical PLM behaviour needed



Progress within the OSLC PLM Workgroup

- Main scenario is stable and supported additional extensions underway
- Updated PLM Reference model 1.1 - *New* for Innovate 2011
 - ▶ Storyboard to assist exploration and usage (topcased model and HTML
 - ▶ ALM and PLM tool examples (TC, DOORS, topcased
 - ▶ Detailed use-case analysis underway to support RELM/PLE alignment
- Summary and initial conclusions of the current Spec analysis
- PLM behaviour of an OSLC Resources under defined – first draft extensions available
- Results of Prototyping using the Reference Implementation for OSLC RIO (eclipse Lyo)
- Case studies promoted at Innovate

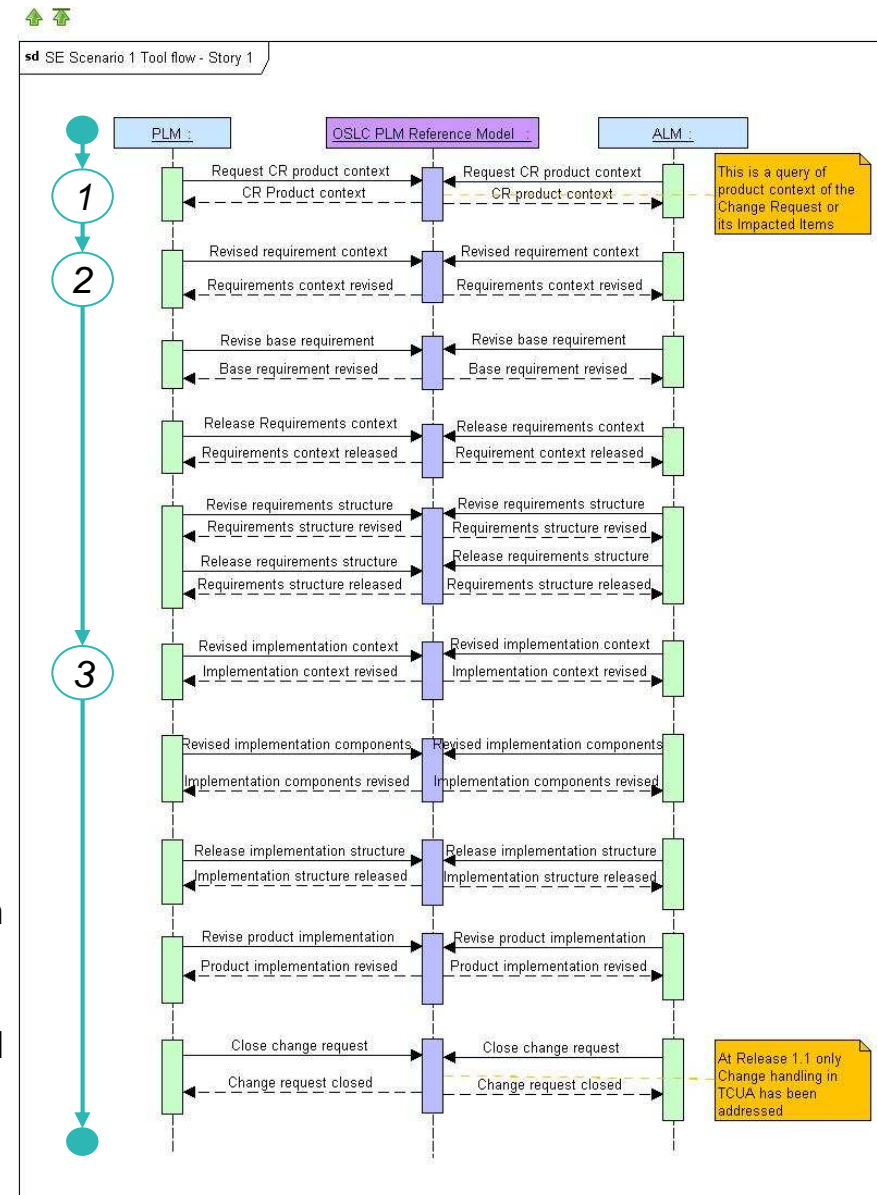


Summary of the scenario

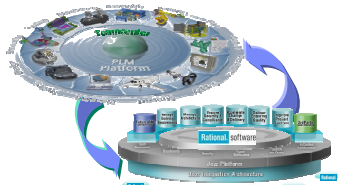
A system responsible, i.e. a Systems Engineer, in a Business unit, needs to respond quickly and accurately to requests for product and system changes to meet responsiveness and cost objectives

- 1 assess the full impact of a change on the system definition, which is a combination of the relevant agreed requirements, specifications and implementation descriptions
- 2 prepare an update to the system requirements to fully specify the change request, working on the appropriate areas, re-using relevant requirements and calling upon other contributors, as needed, to meet the business objectives
- 3 prepare and oversee an update of the full system definition as an implementation of a solution to the change request, working on the appropriate areas, re-using or designing relevant content and calling upon other contributors, as needed, to meet the system objectives

Diagram SE Scenario 1 Tool flow - Story 1



Applying today's OSLC Specs in a PLM context - examples

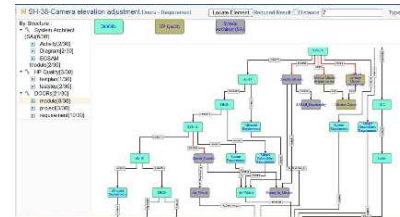


**Siemens TCUA
Rational Team Concert**

Enterprise change handling

Research project to expose, link and navigate relationships across lifecycle artefacts

Showcases Siemens Teamcenter, Rational Team Concert and ClearQuest



Relationship Hub

Research project to expose, link and navigate relationships across lifecycle artefacts

Showcases DOORS, Siemens Teamcenter, System Architect and HP Quality Center

AM, CM, RM 2.0



Product Collaboration portal demonstrates tailoring of an Enterprise Collaboration Platform using IBM's Product & Service Framework

Uses CM1.0 and CM2.0 to provide views and mash-ups across, product planning in Focal Point, feature development in RTC, PDM, ERP (SAP) and Sales Catalog



Customer modification request feedback to development

Customer and service partner project to validate usage of OSLC to reduce time and cost for integration of enterprise application with new Quality Management platform

Showcases In-house, CQ, RQM